

4,200 BHP MABISEL OSPREY



**DIMENSIONS**

LENGTH OVERALL	56.50M	185.44 ft
BREATH MLD	11.60m	38.04 ft
DEPTH	4.05m	13.28 ft
DRAFT	3.56m	11.67 ft
DEADWEIGHT	786 t	
CROSS TONNAGE	742 t	
NET TONNAGE	222 t	

**CAPACITIES/TRANSFER RATES**

FUEL OIL	4243m <sup>3</sup> – 2 x 80m <sup>3</sup> /hr @ 60m head
DRILL WATER	183.0m <sup>3</sup> – 80m <sup>3</sup> /hr @20m and 60 m head
POTABLE WATER	3060 m <sup>3</sup> -80 m <sup>3</sup> /hr @60 m head
DRY BULK (6 TANK- 3240 CU/FT)	90 m <sup>3</sup> -40 t/hr @3.8 bar
LIQUID MUD	208.3 m <sup>3</sup> – 2 x 80 m <sup>3</sup> /hr @ 50m head
DISPERSANT (2 TANKS)	18.4 m <sup>3</sup>
FOAM (2 TANKS)	18.4 m <sup>3</sup>
CONNECTION	Weco 4”and 5” – Camlock 2”, 3” and 4”
FREEZER SPACE	10 m <sup>3</sup> at – 18 <sup>oc</sup>
COOL ROOM SPACE	10 m <sup>3</sup> at + 4 <sup>oc</sup>
FREE DECK SPACE	28m x 8m = 224 m <sup>2</sup>
DECK STRENGHT	375t, 25t /m <sup>2</sup>

**DECK EQUIPMENT**

AHT WINCH	diesel driven double drum, watertall type 120t line pull and 150t brake capacity
TOW WIRE	1 x 800m x 52 mm wire diameter
WORK WIRE	1 x 1000m at 52 mm wire diameter
SPARE WORK WIRE	1 x 850m x 48 mm wire diameter
PUCAN HOOK	1 for 50mm – 54mm wire
TOWING PINS	2
STERN ROLLER	3.1m x 1.5m diameter, 150t SWL
TUGGER WINCHES	2 x 31t
CRANE	1 HIAB 1165/2 6T @ 1.7m, 660kg @ 10.7m reach
WINDLASS	1 x 32mm Rasmussen hydraulic. 60 m/min
ANCHORS	2 x 118 kg + spare
ANCHOR CHAIN	2 x 270 m of 30mm Chain

**MACHINERY**

MAIN ENGINES	2 x Daithatsu D DSM - 32 total 4200 BHP @ 600 RPM
BOW THRUSTERS	1.6t
PROPELLERS	2 x FPP in knort nozzles
RUDDERS	2
BOLLARD PULL	52t
AUXILIARIES GENERATORS	3 x 180kw, 440 V, 60 Hz

**SPEED/CONSUMPTION**

MAXIMUM SPEED	13.9 knots on about 14.5t /24hr
ECONOMIC SPEED	9 knots on about 5.5t/24hr
IN PORT	0.8 t/24hr
STAND BY AT SEA	2.3t/24hr

**ACCOMMODATION**

BERTHS	23 BERTHS IN 11 CABINS = 5 x 1 BERHS CABINS
CREW MAXIUM	113 x 2 BERTHS CABINS
PASSENGERS	123 x 4 BERTHS CABINS

**FIRE FIGHTING**

PUMPS	2 x 300 m <sup>3</sup> /hr-600 m <sup>3</sup> /hr total capacity
MONITORS (WATER/FOAM)	2 x 300 m <sup>3</sup> /hr – Water/foam monitors

**STAND-BY RESCUE**

MOB FAST RESCUE CRAFT	1 x 20 Zodiac 4 men, 25hp
LIFE RAFT	1 x 15 persons, inflatable

**ANTI-POLLUTION SYSTEM**

DISPERSANT STORAGE	18.4 m <sup>3</sup>
DISPERSANTS BOOMS	2 x 6m

**NAVIGATION/COMMUNICATION**

RADARS	2
GYRO	1
AUTOPILOT	1
GMDSS	A3
GPS	2
ECHO SOUNDER	1
INMARSAT- C	1
SSB	1 x 259 W
VHF	2 x 25 W

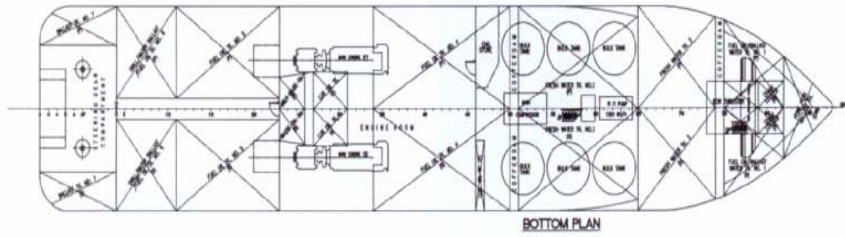
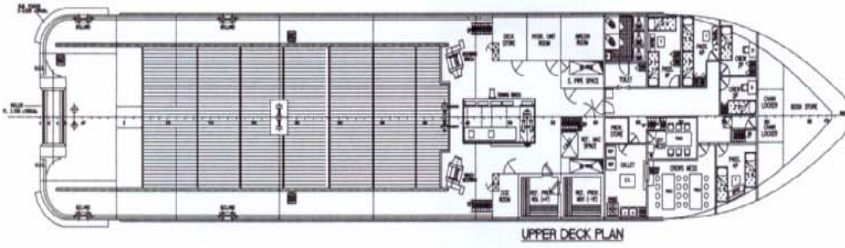
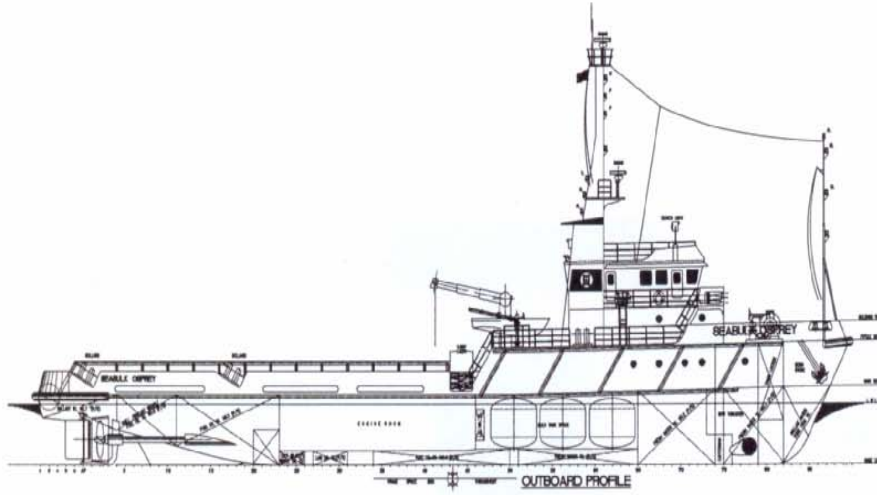
**DOCUMENTATION**

YEAR	1983, REBUILT JULY 2008 (WAD ONNE)
BUILDER	Matsura Tekko Zosen Co. Japan.
CLASS	B.V: 13/3E
FLAT/PORT OF REGISTRY	NIGERIA/LAGOS
CALL SIGN	(OLD V7BL6) (NEW 5NMK2)
OFFICIAL NUMBER/IMO NUMBER	SR 1109/82144920

This specification is preliminary and subject to change without notice. Exact tank capacities, deadweight, deck cargo capacity and other figures that have been calculated and may change when the actual vessel is delivered.

**4,200 BHP MABISEL OSPREY**

**MABISEL TRADING**



OSPREY